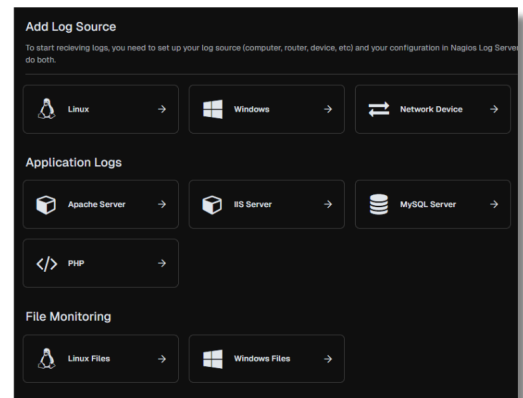


# NAGIOS LOG SERVER OVERVIEW

Nagios Log Server is designed to collect, analyze, alert, and archive log events, providing you with extended insight into the behavior of the servers, users, network devices, and applications in your infrastructure.

**Ease of Use:** Nagios Log Server simplifies the process of searching your log data. Set up alerts to notify when potential threats arise or use queries and dashboards to narrow down and visualize events. View all your data in one location and protect it using built in clustered redundancy. Quickly configure your sources to feed their log data events upstream with built-in setup guides.

**Network Auditing:** Log Server is a premier solution that's perfectly designed for event and network auditing. Easily create alerts through the web-interface based on queries and thresholds most important to you. Notify users via email, SNMP traps, NRDP, or execute a script to ensure quick problem resolution.



**Adaptability:** Nagios Log Server has a fully accessible API, allowing for complete customization to fit the needs of your network. Integrate with third party solutions for seamless connection with your current infrastructure and solutions.

**Highly Scalable Architecture:** Log Server has a highly scalable architecture, so as your organization grows you can easily add additional Log Server Instances expanding your monitoring cluster. This allows you to quickly add more power, speed, storage, and reliability to your overall monitoring system. Nagios Log Server is designed for organizations of any size and can adapt with the click of a button.

**Your Data in Real-Time:** Time-based log data analysis is crucial for effective monitoring. Log Server allows you to view log data in real time, providing the ability to quickly analyze and remediate problems as they occur. This keeps your organization safe, secure, and running smoothly.

**Customizable Dashboards:** Users can create custom dashboards in the web interface to see quick views of data most important and relevant to them. Users can also easily share dashboards with custom URLs to enhance team collaboration.

